



ISSUE# 1006

Pig Prices c/kg HSCW, Trim I - Head on (average indicative prices). W/E 16/09/2022

	PRIME PRICE (Maximum)						AVERAGE PRICE				
	State	Male	Female	Barrows	Total	CH	Male	Female	Barrows	Total	CH
45kg - 60kg	NSW	515	515	0	515	0	490	490	0	490	0
	VIC	380	380	0	380	0	375	375	0	375	0
	QLD	381	388	0	388	2	381	388	0	385	2
	SA	380	380	0	380	0	375	375	0	375	0
	WA	0	411	0	411	6	0	411	0	411	6
	ESB	515	515	0	515	0	405	407	0	410	0
	NAT	515	515	0	515	0	405	411	0	410	1
60.1kg - 75kg	NSW	385	395	0	395	0	373	383	0	376	0
	VIC	390	400	0	400	0	377	391	378	383	0
	QLD	395	405	0	405	0	386	394	383	391	1
	SA	390	400	0	400	0	377	392	378	383	0
	WA	383	0	0	383	0	380	381	0	380	3
	ESB	395	405	0	405	0	375	386	384	383	0
	NAT	395	405	0	405	0	379	389	384	383	1
75.1kg - 85kg	NSW	395	395	0	395	0	377	389	0	380	0
	VIC	392	400	390	400	0	388	391	378	389	0
	QLD	400	405	395	405	0	388	390	383	389	0
	SA	391	400	390	400	0	378	392	378	384	0
	WA	383	383	0	383	0	353	356	0	354	-2
	ESB	400	405	395	405	0	378	387	384	385	0
	NAT	400	405	395	405	0	379	386	384	382	0
85.1kg and above	NSW	0	0	0	0	0	364	373	0	366	0
	VIC	380	390	0	390	0	369	378	369	371	0
	QLD	400	400	385	400	0	380	386	373	383	2
	SA	380	390	0	390	0	369	378	369	373	0
	WA	383	383	0	383	0	362	358	0	360	3
	ESB	400	400	385	400	0	367	375	374	374	1
	NAT	400	400	385	400	0	370	376	374	372	1



ISSUE# 1006

Pig Prices c/kg HSCW, Trim I - Head on (average indicative prices). W/E 16/09/2022

	PRIME PRICE (Maximum)						AVERAGE PRICE				
	State	Male	Female	Barrows	Total	CH	Male	Female	Barrows	Total	CH
45kg - 60kg	NSW	0	393	0	393	2	0	388	0	388	2
	VIC	0	0	0	0	0	0	0	0	0	0
	QLD	442	525	0	525	9	442	475	0	466	4
	SA	0	380	0	380	0	375	375	0	375	0
	WA	0	411	0	411	6	0	411	0	411	6
	ESB	442	525	0	525	9	410	413	0	411	2
	NAT	442	525	0	525	9	410	409	0	411	3
60.1kg - 75kg	NSW	0	460	0	460	460	0	460	0	460	460
	VIC	0	0	0	0	0	0	0	0	0	0
	QLD	395	485	390	485	0	390	393	385	393	1
	SA	380	420	420	420	5	380	397	419	390	1
	WA	383	0	0	383	0	380	381	0	380	3
	ESB	395	485	420	485	0	385	417	401	415	24
	NAT	395	485	420	485	0	384	408	401	410	22
75.1kg - 85kg	NSW	400	420	395	420	0	387	408	386	400	6
	VIC	380	400	390	400	0	380	398	380	389	0
	QLD	417	435	390	435	5	414	419	382	408	2
	SA	413	414	414	414	5	387	401	413	396	1
	WA	383	383	0	383	0	353	356	0	354	-2
	ESB	417	435	414	435	5	390	403	387	399	2
	NAT	417	435	414	435	5	389	401	387	394	2
85.1kg and above	NSW	384	389	0	389	0	383	388	0	386	0
	VIC	385	400	390	400	0	375	391	380	385	0
	QLD	412	400	0	412	2	403	400	0	402	1
	SA	411	411	0	411	5	410	410	0	410	5
	WA	383	383	0	383	0	362	358	0	360	3
	ESB	412	411	390	412	2	390	394	380	397	2
	NAT	412	411	390	412	2	390	393	380	393	2



ISSUE# 1006

Pig Prices c/Kg HSCW, Trim I - Head on (average indicative prices). W/E 16/09/2022

Backfatter Sows (Buyers)				
PRIME PRICE		AVERAGE PRICE		
Maximum		Average		
State	Total	CH	Total	CH
NSW	0	0	190	0
VIC	0	0	170	0
QLD	0	0	285	0
SA	0	0	170	0
WA	0	0	215	8
ESB	0	0	209	0
NAT	0	0	209	1

Backfatter Sows (Sellers)				
PRIME PRICE		AVERAGE PRICE		
Maximum		Average		
State	Total	CH	Total	CH
NSW	0	0	200	0
VIC	0	0	250	0
QLD	0	0	284	0
SA	0	0	270	0
WA	0	0	215	8
ESB	0	0	251	0
NAT	0	0	247	1

ESB (Eastern Seaboard) includes QLD, NSW, VIC & SA states only.

(Buyers)	Baconer Price		Porker Price		No. Sold			
	LW	TW	CH	LW	TW	CH	NLW	NTW
SALEYARD PRICES								
Toowoomba(QLD)	N/A	N/A	0	N/A	285	285	0	48

LW - Last Week
TW - This Week
CH - Change from previous week
N/A - No data provided

Pork Wholesale Prices (ESB c/Kg) (Source: APL Market Reporting TW: This Week | LW: Last Week | MAT: Moving Annual Total)

16/09/2022	CARCASS				BROKEN SALES			
.	Pork	Bacon	Legs	Legs Ham Trim	Saddles	Loin	Forequarters	Bellies
TW	612	571	478	570	994	903	448	1231
LW	612	571	478	570	994	903	448	1231
MAT	592	551	467	567	978	876	427	1126

16/09/2022	CARTON SALES							
.	US Ribs	Boneless legs	Fillet	Boneless Middles -1	Boneless Middles -2	Boneless Shoulders	Pork Neck	Trim - 90CL
TW	1296	791	1049	1115	1300	689	1000	681
LW	1297	791	1049	1115	1300	689	1000	681
MAT	1367	748	1059	1077	1157	660	894	642

Eyes and Ears Australian Pork Limited

This publication is subject to copyright protection. Email enquiries to Market.Reporting@australianpork.com.au

Weekly Grain Comments

(Source: Profarmer)

To the point:

- On the back of dry conditions across the country's key growing regions, Russia's wheat harvest has continued to advance this week, with over 91 per cent completed and a total of 98 million mt harvested, a record level of wheat production.
- The latest USDA crop progress report has stated that spring wheat harvest progress in the US has reached 94 per cent for 2022/23, whilst planting progress is at 21 per cent for 2023/24 winter crop.

21/09/22	CBOT Wheat Dec 22		AUD/USD	ICE Canola Nov 22		AUD/CAD	Matif Canola Nov 22		AUD/EUR
This week	491	894	66.91	879	786	89.41	857	575	67.10
	\$A/t	Usc/bu	US c	\$A/t	\$C/t	CA c	\$A/t	€/t	Euro c
Last Week	470	861	67.29	905	801	88.60	898	607	67.52
Change	+ 21	+ 33	- 0.38	- 26	- 16	+ 0.81	- 42	- 32	- 0.41

International and National

On the back of dry conditions across the country's key growing regions, Russia's wheat harvest has continued to advance this week, with over 91 per cent completed and a total of 98 million mt harvested, a record level of wheat production.

With referendums announced by Putin in occupied regions of Ukraine regarding about whether to join Russia or not, global grain prices have surged higher over the last week as concerns over supply out of the Black Sea region return.

The latest USDA crop progress report has stated that spring wheat harvest progress in the US has reached 94 per cent for 2022/23, whilst planting progress is at 21 per cent for 2023/24 winter crop.

The latest USDA crop progress report has also stated that US corn crop condition has fallen marginally week-on-week and harvest for 2022/23 is now situated at 7 per cent, up from 5 per cent in the previous week.

A new grain storage is set to open in Mount McLaren over the next month in response to the forecasted large crop across Queensland, it is expected to hold 100,000 tonnes this year and over 200,000 tonnes in 2023 once additional construction has been completed.

New South Wales flood warnings over the coming months has prompted a 20 per cent rise year on year in silo bag sales with the shortage causing issues across the state at the present time.

Wheat

QLD/Nth NSW

Old crop markets have now converged with new crop values. Higher protein grades are demanding \$15- 20 above bid levels for select parcels. Feed wheat grades lack buyer demand and trade depth with consumers monitoring new crop. New crop bids remain firm with the weather outlook and increasing perception that high protein grades will be limited across the east coast influencing the market.

Sth NSW/VIC/SA

Offshore wheat values have been very volatile this week creating more uncertainty in the market. Local prices have continued to hold up well in the spot market on both delivered and track, but the depth in buyers is reducing as many are getting close to being done for the year and are now focused on new crop. With offshore customers remaining hand to mouth filling upcoming demand for Nov/Dec could be challenging, without knowing what the new crop quality will be like.

Barley

Sth QLD/Nth NSW

Old crop bids continue to move sideways as the market experienced a week of patchy demand. Any demand continues to be met from northern and central NSW supplies. New crop barley was moving with wheat and may come under pressure as NSW harvest ramps up. Slow international markets are providing little influence across track and up-country pricing. Malt grades continue to reflect good value, but growers are not sellers (yet).

Sth NSW/VIC/SA

Old season barley markets remain thin with low nearby demand domestically and even with some export shipments pegged to go out, they appear to be all well covered. Prices are holding week on week for both old season and new season barley, which are both bidding at the same price into the Melbourne delivered market. Track barley is discounted naturally against new crop values, with increased carry costs coming online from October onwards.

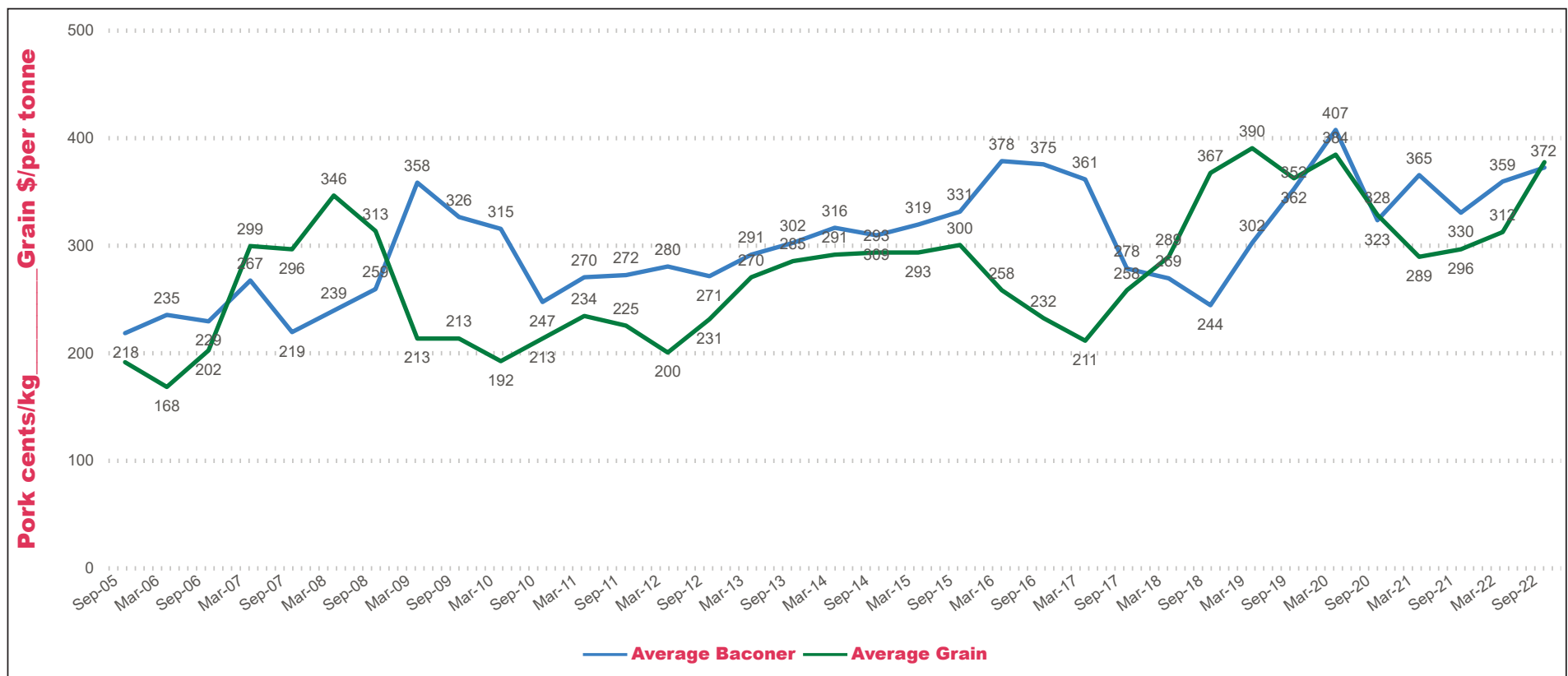
Sorghum

QLD

Old crop sorghum continues to find support from packers for select parcels (upwards of 500kt). Some demand exists into Brisbane ports but sellers are still preferring to deliver to up- country sites when available. New crop was becoming the focus of growers and traders. Planting has stalled as a direct result of recent rain and nearby forecasts preventing growers from getting out into the paddocks.



**Average Baconer vs Feed Grain Prices
(Eastern Seaboard)**



Data Source Pro Farmer - Produced by APL



Weekly Grain Table (Source: ProFarmer)

Delivered	Darling Downs			Brisbane			Northern NSW			Newcastle		
	LW	TW	CH	LW	TW	CH	LW	TW	CH	LW	TW	CH
Feed Wheat	360	370	10	430	430	0	372	380	8	395	395	0
Feed Barley	360	368	8	313	303	-10	315	350	35	290	295	5
Sorghum	352	365	13	375	375	0	288	303	15	342	342	0
Soy meal	903	935	32	903	935	32	923	955	32	903	935	32
Canola meal	630	620	-10	635	625	-10	570	560	-10	570	560	-10
Cotton seed	827	760	-67	787	720	-67	797	730	-67	787	720	-67

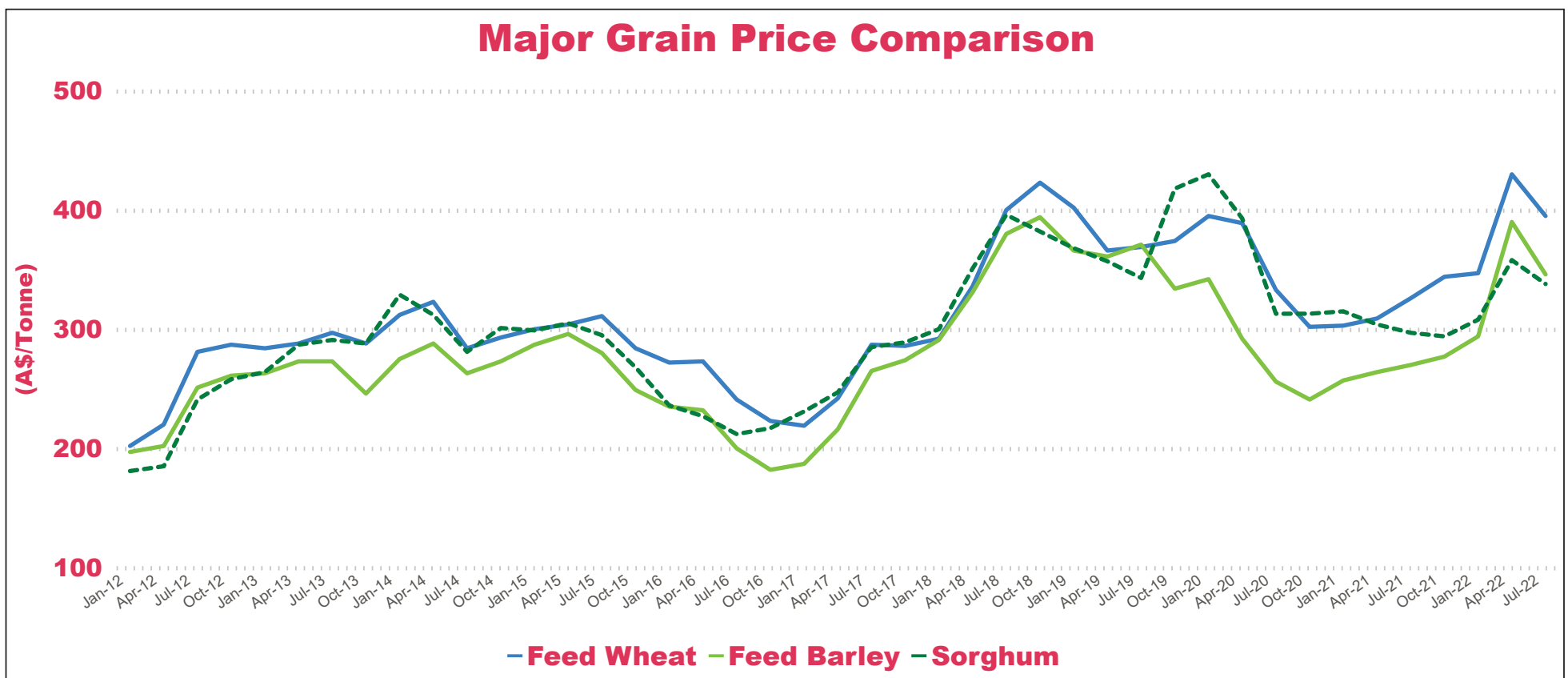
Delivered	Southern NSW			Port Kembla			Goulburn Valley			Central VIC		
	LW	TW	CH	LW	TW	CH	LW	TW	CH	LW	TW	CH
Feed Wheat	375	380	5	410	410	0	365	365	0	380	385	5
Feed Barley	340	350	10	325	325	0	340	340	0	320	330	10
Soy meal	938	970	32	933	965	32	933	965	32	923	955	32
Canola meal	540	540	0	565	565	0	550	550	0	565	565	0
Triticale	330	330	0	330	330	0	410	410	0	410	410	0

Delivered	Geelong			Adelaide			Freemantle		
	LW	TW	CH	LW	TW	CH	LW	TW	CH
Soy meal	903	935	32	923	955	32	0	0	0
Canola meal	550	550	0	595	595	0	560	560	0
Feed Wheat	405	410	5	377	374	-3	350	350	0
Feed Barley	370	375	5	320	315	-5	305	305	0
Feed Oats	340	340	0	405	405	0	280	280	0

DD = Darling Downs Bris = Brisbane Nth NSW = Northern New South Wales New = Newcastle Sth NSW = Southern New South Wales Pt K = Port Kembla GV Goulburn Valley Central Vic = Central Victoria Geel = Geelong Adel = Adelaide Freo = Fremantle. LW = Last week TW = This week CH= Change N/Q = No Quote
Due to the volatility of the grain market, caution must be used when valuing data.



Data Source Pro Farmer
Produced by APL



Disclaimer: The information contained in this report cannot be forwarded to, or used by, any third party without prior written consent from Australian Pork Limited (APL). This information has been collected and processed by APL and has not been prepared for any particular individual or entity. The information contained in the report may not be an accurate reflection of market prices or of changes in market prices. The report does not constitute a recommendation by, or opinion of, APL. While APL has no reason to believe that the information contained in this report is inaccurate, APL is unable to guarantee the accuracy of the information at any point in time and, subject to any terms implied by law which cannot be excluded, accepts no responsibility for loss suffered as a result of any party's reliance on the accuracy or currency of the content of this report. The information contained in the report should not be relied upon for any purpose, including as a substitute for professional advice. Nothing within the report constitutes an express or implied warranty, or representation, with respect to any future matter or as to the value of or demand for any good.